

# Adams County Sustainability & Renewable Energy

Arielle Gerstein  
Sustainability Program Administrator  
May 7, 2026



ADAMS COUNTY  
COLORADO

ADAMS COUNTY  
GOVERNMENT CENTER

# Agenda

- Adams County Sustainability Plan
- How these projects fit in the Plan
- Renewable Energy Projects
- Saving taxpayer money



# Adams County Sustainability Plan

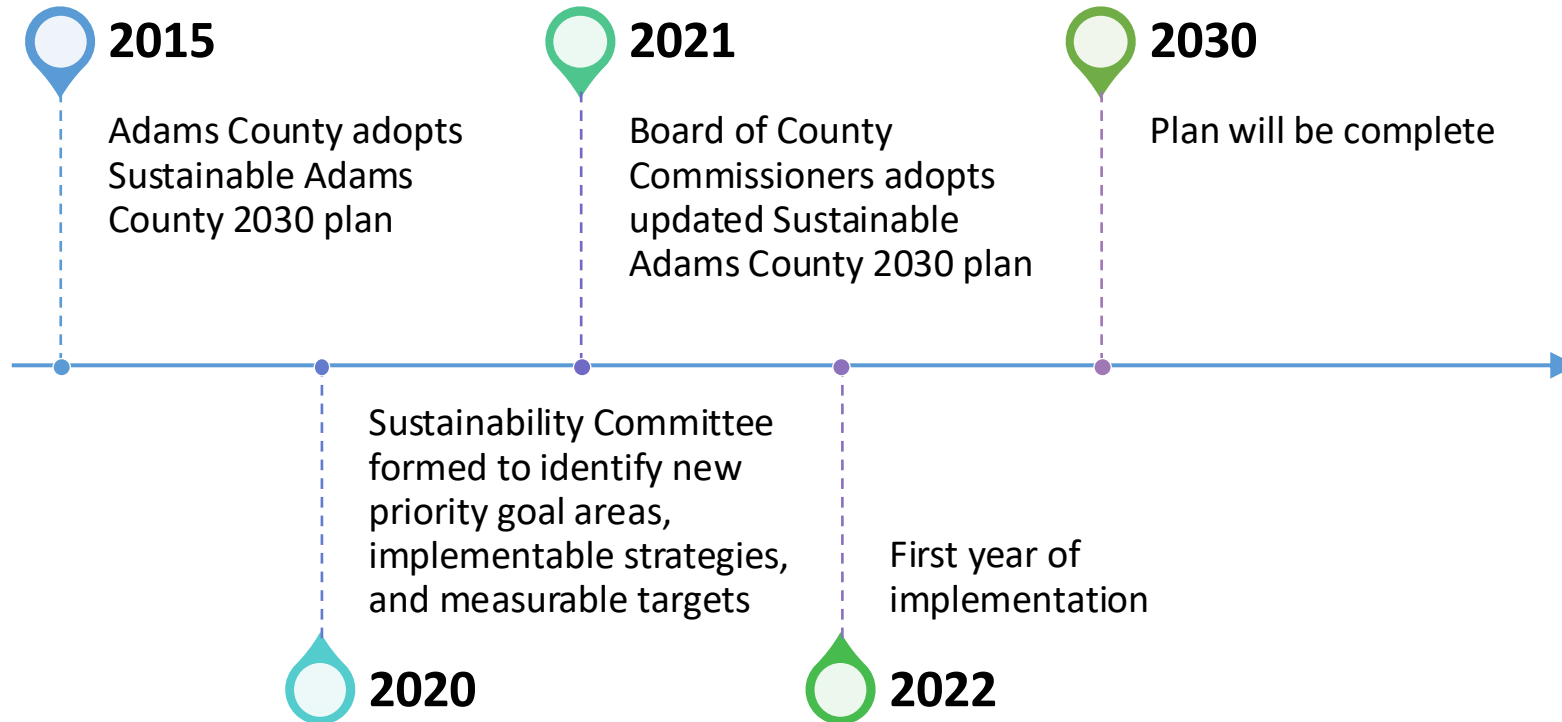


ADAMS COUNTY  
COLORADO

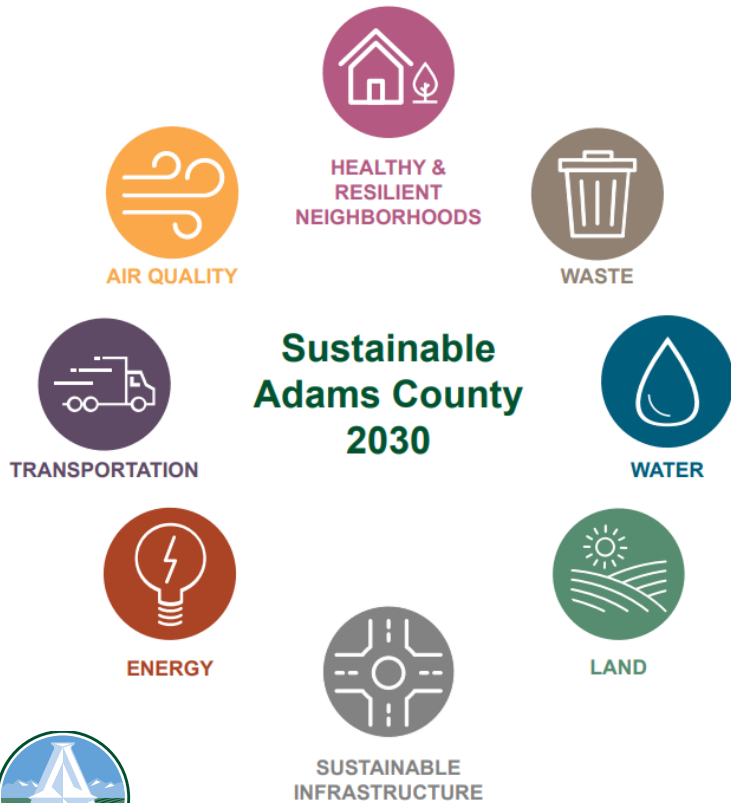


ADAMS COUNTY  
GOVERNMENT CENTER

# BACKGROUND/HISTORY



# PLAN LAYOUT



- ❑ Multiple goals under each focus area
- ❑ Measured by an average of the strategies % complete under that goal

- ❑ Multiple strategies under each goal
- ❑ Measured by % complete



- ❑ Quantitative number to meet by 2030

# How these Projects Fit in the Plan



ADAMS COUNTY  
COLORADO



# Energy Goals & Strategies

- **Energy Goal 1:** Incorporate energy efficiency and new energy technologies and building practices in new facilities and retrofit eligible existing facilities.
- **Energy Goal 2:** Increase use and procurement of renewable energy for county facilities
  - **Strategy 2.1** Identify potential locations for renewable energy installations on county property
  - **Strategy 2.3:** Incorporate renewable energy into new county facilities
- **Energy Goal 3:** Expand, participate, and advocate for equitable clean energy opportunities for all community members to reduce our carbon footprint.



# Renewable Energy Targets

Target	2019 Baseline	2030 Target	Current Progress
Number of facilities with on-site solar	0	5	2
Percent of facility electricity supplied by renewable energy	24%	100%	58%

Utility	Renewable Percentage by 2030
Xcel Energy	62.2%
United Power	90%
Morgan County REA	0%
CORE Electric COOP	90%



# Renewable Energy Projects



ADAMS COUNTY  
COLORADO



# Solar & Geothermal - 101

- Unless a facility is supplying its own energy, the percent of renewable energy supplied in each facility is determined by the energy mixture provided by the utility.
- A facility can supply its own renewable energy through ground-mounted or rooftop solar, small-scale wind turbines, and microgrids.
- Geothermal energy is used for industrial-scale electricity, requiring very deep wells (1,000 – 10,000 ft). This type of drilling is limited to specific geological locations.
- All geothermal projects at Adams County are creating commercial heating and cooling through ground source heat pumps and do not directly supply renewable energy to a facility. They do create more efficient heating and cooling and eliminate the use of natural gas. These wells are 150-400 ft deep.



# Solar – Animal Shelter

- 212 kW DC system size - rooftop
- Will reduce facility energy use intensity from 269 to 198
- 228,780 kWh of electricity saved per year
- \$13,727 of electrical costs saved per year
- 183 tons CO<sub>2</sub> saved annually



# Solar – Human Services Center

- 777.6 kW DC system size – solar carports
- Will reduce facility energy use intensity from 31.7 to 14.1
- 1,047,906 kWh of electricity saved per year
- \$41,916 of electrical costs saved per year
- 840 tons CO<sub>2</sub> saved annually



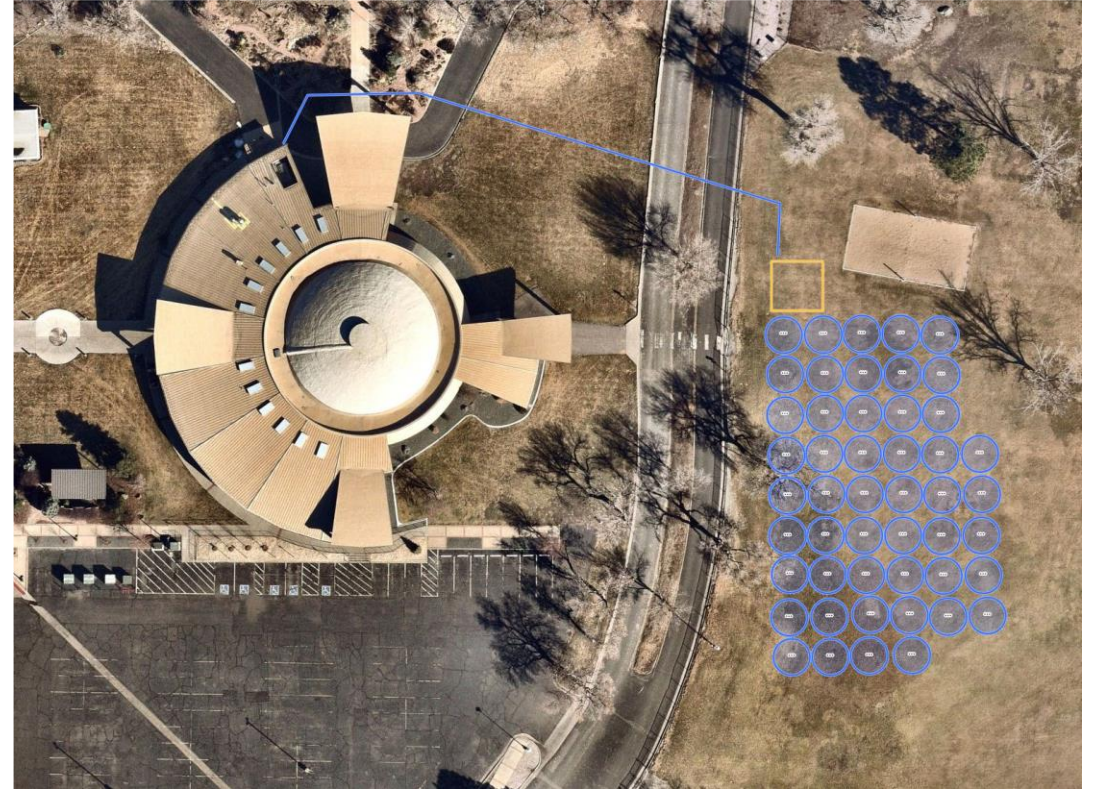
# Solar – South Parks

- 72 kW DC system size – rooftop
- This is a newly constructed facility
- \$7,600 of electrical costs saved per year
- 79 tons CO<sub>2</sub> saved over 20 years



# Geothermal – Waymire Dome

- 49 new, 400 ft. deep bores
- 423,000 kWh of electricity saved per year
- \$31,000 of electrical costs saved per year
- 58.4 tons CO<sub>2</sub> avoided
- Improved thermal comfort with highly efficient, operational HVAC systems



# Geothermal – CASP Tower

- 13 new, 400 ft. deep bores
- 157,000 kWh of electricity saved per year
- \$10,000 of electrical costs saved per year
- 113 tons CO<sub>2</sub> avoided
- Improved thermal comfort with highly efficient, operational HVAC systems



# Geothermal – Sheriff Substation

- Six pipe water-to-water heat pumps
- 24% savings on electrical costs per year
- 363 tons CO<sub>2</sub> avoided
- Improved thermal comfort with highly efficient, operational HVAC systems
- Cost subsidized with \$2 million grant



# Saving Taxpayer Money



ADAMS COUNTY  
COLORADO

ADAMS COUNTY  
GOVERNMENT CENTER

# Grants

- Colorado Energy Office has awarded Adams County two geothermal grants for CASP Tower and Waymire Dome totaling \$342,000
- Using funding from the EPA's Climate Pollution Reduction Grant, the Colorado Energy Office awarded Adams County \$2 million for the geothermal installation at the Sheriff's Substation as part of the Large Building Decarbonization Grant

Total Grant Funds: \$2,342,000



# Federal Elective Pay

- Elective Pay allows applicable entities that do not pay Federal income taxes to receive a payment equal to the full value of tax credits for building qualifying for clean energy projects.
- All Adams County renewable energy projects in this presentation are eligible for elective pay.
- Adams County expects to receive between \$2.5 and 3 million in tax incentives for its renewable energy projects.



Questions?



Electric Vehicle Infrastructure